

TECHNICAL DATA SHEET

FSM672-415WS



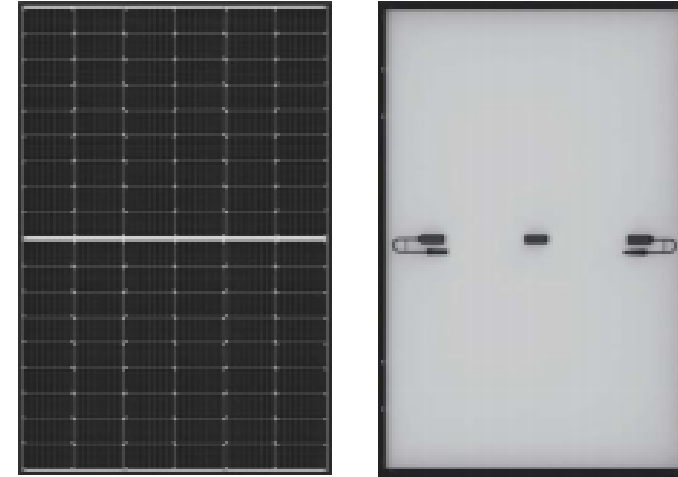
Technical Data

Type	FSM672-415WS
Type of Solar Cell	Mono-crystalline, PERC
Number of Cells	144pcs
Size of module	1722x1134x35mm
Module, Weight	20.5 kg
Connector / Cross-Section	Junction Box
Cables, Length (+/-)	Customizable
Front Cover Glass	Safety Glass
Front Cover Glass, Thickness	3.2 mm
Frame	Anodized Aluminium

Electrical Data

Maximum Power	$P_{MPP\ STC}$	415W
Power Tolerance	Δ_{STC}	+ 3%
Maximum Power Voltage	$U_{MPP\ STC}$	30.78V
Maximum Power Current	$I_{MPP\ STC}$	13.48A
Open Circuit Voltage	$U_{OC\ STC}$	36.19V
Short Circuit Current	$I_{SC\ STC}$	14.98A
Module Efficiency	η_{STC}	21.3%
Maximum System Voltage	U_{DC}	1000 V

STC: Irradiance 1000 W/m²; Spectrum AM 1.5; Cell Temperature 25°C, Wind 0 m/s



Voltage Coefficient	$\beta_k (U_{oc})$	$-0.35 \pm 0.01\%/K$
Current Coefficient	$\Phi_k (I_{sc})$	$0.065 \pm 0.015\%/K$

Power Warranty

- 10 years performance warranty to 90%
- 25 years performance warranty to 80%
- 12 years warranty against production and material defects

Certifications

IEC 61215, IEC 61730, TUV, CE, ISO9001:2000

